

West Valley Family Meeting 2020



INTRODUCTIONS

- > David Claxton - Principal
- > Rachel Harmon - Assistant Principal
- > Matt Pattillo - Assistant Principal





WELCOME

THE MISSION OF THE WEST VALLEY MIDDLE SCHOOL COMMUNITY IS TO INSPIRE THE STUDENTS TO BE RESOURCEFUL, RESPECTFUL, AND RESPONSIBLE CITIZENS BY PROVIDING A CHALLENGING AND SAFE LEARNING ENVIRONMENT.



PACK PRIDE

P = POSITIVE

R = RESPECT

I = INTEGRITY

D = DEDICATION

E = EXCELLENCE



FORTITUDE...OUR THEME FOR THE YEAR

- Having the grit and heart to stay optimistic and positive even when facing adversity
- Our fortitude to be successful this year is fueled by the "Positive" of our Pack PRIDE



AGENDA

- > General West Valley Info
- > Procedures
- > First Week Plans
- > Student Schedules Update
- > Red Day Protocols



General West Valley Info 2020



WEST VALLEY MEDIA CENTER

OPEN MOST MORNINGS AT 7:30 UNTIL 4:00
BOOK CLUB - WRITERS' CLUB - MAKERSPACE



ATHLETICS

• KNOX COUNTY SANCTIONED SPORTS

- COACH OR SPONSOR PAID A SUPPLEMENT BY THE SCHOOL SYSTEM
- BASKETBALL, CHEERLEADING, AND TRACK
- POTENTIAL FOR ADDITIONAL COACHING FEE (CHEERLEADING/DANCE)
- GRADE REQUIREMENTS
- PHYSICAL REQUIRED FOR TRYOUTS
- SCHOOL INSURANCE REQUIRED

• SCHOOL SANCTIONED

- DANCE TEAM
- FACULTY SPONSOR (NO SUPPLEMENT PAID BY KCS)
- GRADE REQUIREMENT
- HOME BASKETBALL GAMES/SCHOOL FUNCTIONS/COMPETITIONS
- PHYSICAL REQUIRED FOR TRYOUTS
- SCHOOL INSURANCE REQUIRED

★ MEMBER OF TMSAA



COMMUNITY SPORTS

- ★ **NOT SANCTIONED BY KNOX COUNTY BUT REQUIRES A PHYSICAL.**
- ★ **THESE TEAMS ENCOURAGE PARTICIPATION BY ANY STUDENT**
 - **CROSS-COUNTRY, TENNIS, GOLF, FOOTBALL, BASEBALL, SOFTBALL, VOLLEYBALL, SOCCER, SWIM, ETC...**
 - **OUR GOAL IS TO SHARE INFORMATION ABOUT THESE SPORTS ON OUR SCHOOL WEBSITE AND/OR IN THE OFFICE AS WE RECEIVE IT.**



WVMS PTSA

- THE WEST VALLEY MIDDLE SCHOOL PTSA IS A BRANCH OF THE TENNESSEE PTA.
- THE PTSA/PTA IS A NON-PROFIT ORGANIZATION WHICH SEEKS TO UNITE THE FORCES OF HOME, SCHOOL, AND COMMUNITY ON BEHALF OF CHILDREN AND YOUTH.
- GREAT WAY TO GET PLUGGED INTO THE SCHOOL.
- SPONSOR COMMUNITY MEETINGS AT SCHOOL AND CONTINUOUSLY SUPPORT OUR STUDENTS AND STAFF
- STAFF BREAKFAST; PICNIC TABLES; STAFF MASKS; GRADE LEVEL CELEBRATIONS, GIFT CERTIFICATES FOR STAFF, STAFF LUNCHEONS
- FACEBOOK: WEST VALLEY MIDDLE SCHOOL PTSA : [HTTPS://WESTVALEYPTSA.ORG](https://westvalleyptsa.org)
- PTSA PRESIDENT: SARA COMPHER-RICE (SARA@TNDUI.COM)
- INFO COMING SOON ABOUT THE MEMBERSHIP DRIVE AND HOW TO PURCHASE WVMS GEAR



WEST VALLEY FOUNDATION

- ESTABLISHED '15 - '16
- PURPOSE = PROMOTE AND SUPPORT THE ACADEMIC EXCELLENCE OF WEST VALLEY MIDDLE SCHOOL
- GIFTS TO THE SCHOOL
- SUPPORT TEACHER INSTRUCTIONAL NEEDS AND PROFESSIONAL GROWTH



THE WORK OF THE WVMS FOUNDATION

- Over 400 Chromebooks
- Staff laptops
- Laptop chargers
- Audio/Visual set up in gym
- Teacher grants
- Sponsoring professional development
- Special Olympics field trips
- Positive Behavior Incentives
- Covid Support
 - Picnic tables for lunch
 - Stanchions for the hallways
 - Traffic flow hallway stickers
 - Seating stickers
 - Online programs for staff to support online learning
 - Document cameras
 - Mobile presentation carts
 - Digital tablets
 - Folding tables

West Valley Policies



DRESS CODE

- > We ask that students follow the Knox County dress code.
- > [Board Policy J-260](#)



CELL PHONES

- > Student cell phones/devices are to be put away during instructional hours (8:30 - 3:30).
- > Phones need to be totally silenced and out of sight.
- > Phones can be placed in backpacks but must be turned off.
- > [Knox County Board Policy J-240](#)



New WVMS Policies and Procedures 2020



ARRIVAL AND TEMPERATURE CHECKS



- > Doors will open at 7:30 a.m.
- > All students will have their temperatures checked before they enter the building
 - There will be teachers in the front and back of the building to check temperatures
- > There will be extra masks at each entrance for students without a mask
- > There will be a holding area for students with a temperature above 100.4
 - Students will be required to call parents and leave campus

TEMPERATURE STATION IN FRONT OF THE SCHOOL

- We will have three temperature station lines at the front
- Student should be masked
- Students wait 6 feet apart at the cracks in the concrete



TEMPERATURE STATION IN BACK OF THE SCHOOL

- We will have temperature stations lines at the back of the school for bus riders
- Student should be masked
- Students wait 6 feet apart at the cracks in the concrete



BUS HALL

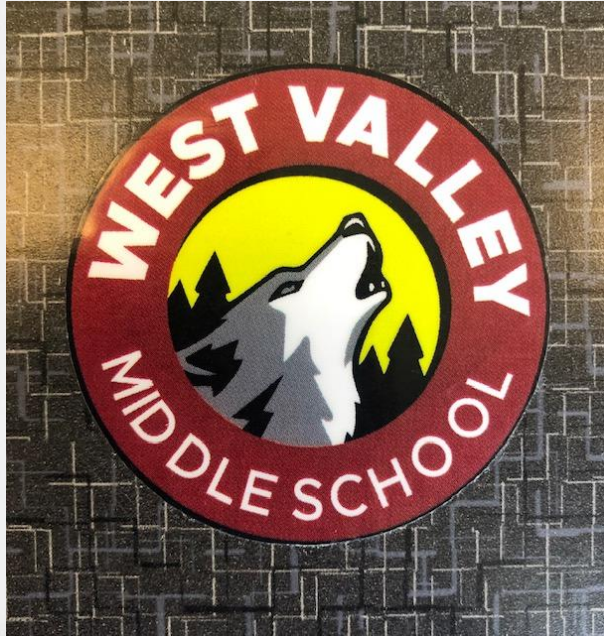


- > 7:30 - 8:00 Bus Hall
 - Students eating breakfast will sit in the booths and go to their designated bus hall areas when they finish
 - 6th grade students will sit on the other side of the cafeteria
 - 7th and 8th grade students will sit on both sides of the gym with their respective grade level
- > Seats in the cafeteria and spots in the gym will be marked
- > Students will report to homeroom/advisory at 8:00 and advisory will be from 8:30 - 8:45

6TH GRADE BUS HALL IN CAFETERIA FROM 7:30 AM TO 8:00 AM



6TH BUS HALL - SIT AT A WOLF



7TH AND 8TH GRADE BUS HALL IN GYM FROM 7:30 AM TO 8:00 AM

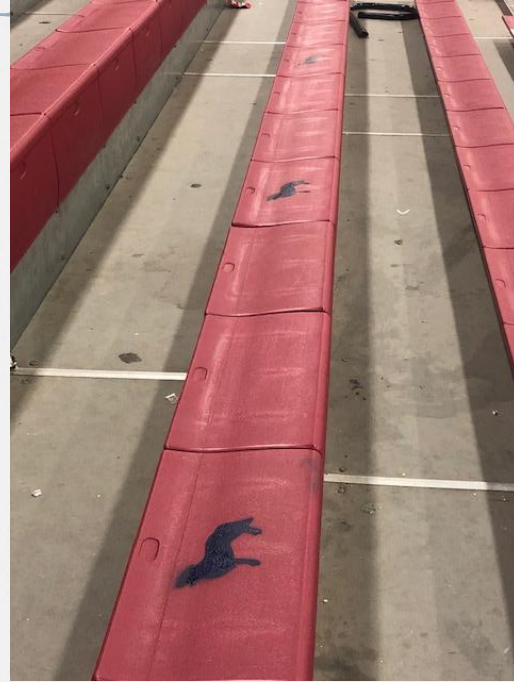


8th grade on larger side



7th grade on smaller side

7TH AND 8TH GRADE BUS - SIT ON A WOLF



FACE COVERINGS

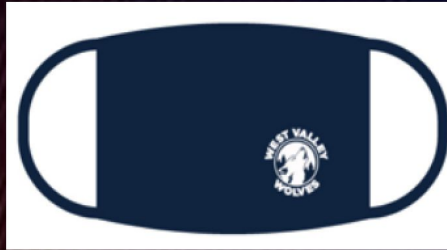


- > Masks will be required in the building at all times
 - Masks should be secured over the nose, mouth, and under the chin
 - Do not put face covering around your neck or up on your forehead
 - Do not touch the face covering, and if you do, wash your hands or use hand sanitizer to disinfect
 - Masks must be appropriate and within dress code
 - Students should never touch another students mask
- > Social distancing should be maintained as much as possible



WEST VALLEY FACE MASKS

1 FOR \$7 OR 2 FOR \$12



- 100% Cotton
- Covers nose, mouth, and chin
- Easy on and off ear loops
- Make checks payable to WVMS
- Email amanda.varnes@knoxschools.org or beth.abee@knoxschools.org to reserve your mask today!

THANK YOU FOR SUPPORTING THE WV DANCE TEAM!

LUNCH

- > There will be 3 lunch periods and all students will eat with their grade level
 - There will be staggered times that students come to and leave the cafeteria
- > Students will not be required to wear masks when eating and drinking
- > Students will eat in the pavilion, in the cafeteria, and in the main hallway or outside when possible
- > All tables will be marked with designated seats to promote social distancing
- > Lunches purchased in the cafeteria will be individually packaged.









BREAK TIME

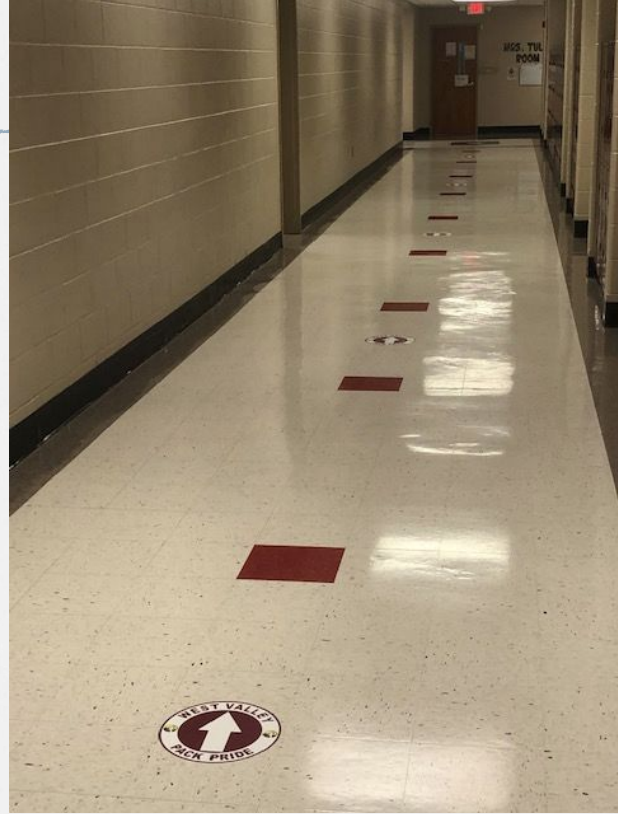
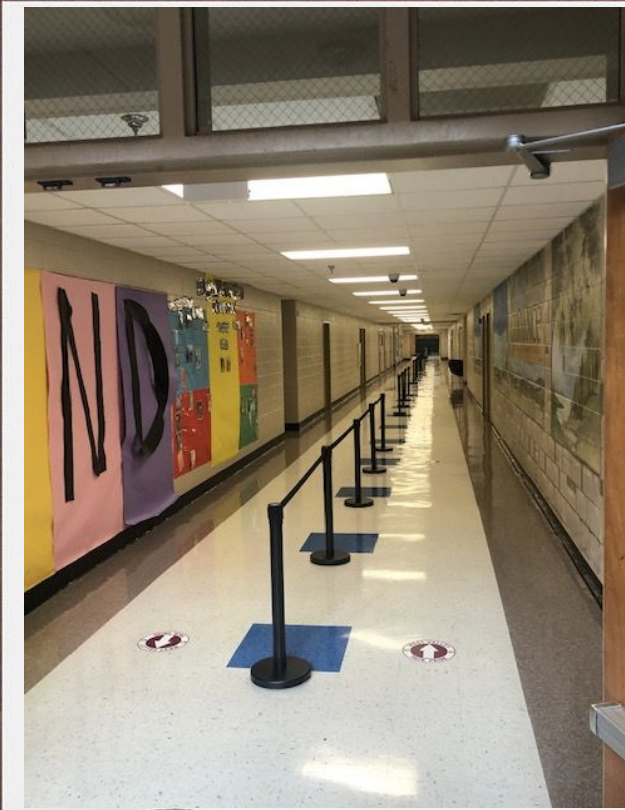
- > There is additional time built into 3rd period to give students and teachers a break.
- > Each grade level will have a designated time to take their break
- > Teachers will be encouraged to take kids outside to walk around the building, walk around the track, spread out in the field, spread out on the basketball court, etc.
- > Students and teachers will be permitted to remove their masks during this time when social distancing can be maintained.



HALLWAY TRANSITIONS



- > There are stanchions and arrows down the main hallways where two way traffic is necessary.
 - Students should remain on the right side of the hallway and continue moving at all times to prevent holding up traffic.
- > There will be one way, counterclockwise movement in the music/PE hallway.
 - There are arrows directing the flow of traffic.
 - Students should enter through the doors near chorus and exit through the doors near guidance.
- > There will be one way, counterclockwise movement in the grade levels.
 - > There are arrows directing the flow of traffic.
 - > Students are not allowed to travel against traffic, even if they are only going one room over.







RESTROOMS AND WATER FOUNTAINS

- > Students are not allowed to drink out of the water fountains but are encouraged to bring water bottles to fill up at the filling stations
- > Restrooms will be open between classes
- > Teachers will be responsible for monitoring the number of kids in the restroom
- > Students will be permitted to use the restroom during class following their teachers' in class policies and procedures.



LOCKERS AND BACKPACKS

- > Students will not be assigned lockers this year to minimize congestion in the hallways.
- > Students will be allowed to have backpacks in the classroom.
 - Backpacks should be able to fit under desks or in a designated location in the teacher's classroom.
- > Students should take all necessary school supplies home with them each day.



DISMISSAL FOR WALKERS AND CAR RIDERS

- > At 3:30 PM walkers and car riders will be dismissed and should leave the building as quickly as possible.
 - Walkers need to immediately leave campus and should not take masks off until on sidewalk next to front drive.
 - Car riders will wait in designated areas by grade level
 - Car riders will be required to keep their masks on until social distancing can be ensured.



DISMISSAL ZONES FOR WALKERS AND CAR RIDERS

- > 6th Grade students will exit through the glass doors just outside the 6th grade wing and wait in the grassy area in front of the art rooms.
- > 7th Grade students will exit through the glass doors at the bottom of the stairs and wait in the grassy area in front of the library.
- > 8th Grade students will exit through the main front entrance and wait directly in front of the main entrance to the building.
- > Related Arts students will exit through main front entrance and wait in grade level zones.



6TH GRADE WALKER AND RIDER EXIT



7TH GRADE WALKER AND RIDER EXIT



8TH GRADE WALKER AND RIDER EXIT



AFTERNOON WAITING ZONES IN THE FRONT OF THE SCHOOL



7th Grade

8th Grade

6th Grade

DISMISSAL FOR BUS RIDERS

- > At 3:30 1st load bus riders will be dismissed and should go immediately to their bus
- > 2nd load bus riders will remain in their 6th period classroom.
- > At 3:35 2nd load riders will be dismissed and should exit to the pavilion as quickly as possible.
 - Students will be seated by bus assignment
- > Dismissal zones for 1st load bus riders
 - 6th Grade students will exit through the back exit by Mrs. Roskop's room
 - 7th Grade students will exit through the back exit downstairs by the elevator
 - 8th Grade students will exit through the main back entrance



6TH GRADE BUS EXIT



7TH GRADE BUS EXIT



8TH GRADE BUS EXIT



First Week Plans



FIRST WEEK PLANS


- > On 8/24 students will be explicitly taught all procedures reviewed in tonight's meeting.
- > 8/25-8/27 students will complete orientation for virtual tools.
 - This orientation will benefit them for in person instruction and in the event we go into "red" at the school or district level.
- > Students will participate in advisory at the beginning of every day to support social and emotional health.



Student Schedules Update



STUDENT SCHEDULE UPDATES

- > Student schedules will be available to view on Aspen sometime on August 19.
- > Approximately 95% of students got first requests for core classes and year long related arts.
- > There may be a few missing classes--especially if a student is virtual--as we are still working with the virtual school on seat availability.
- > Related arts
 - In person students will participate in a wheel for one period of related arts.
 - Virtual students will participate in a pair of semester-long related arts for one period of related arts.
- > Currently do not have a Spanish teacher staff.
- > Fewer Related Arts academic release  able to be granted due to availability of seats.

Red Day Protocols



RED DAY PROTOCOL

- > In the event that the school or district go into a “red day” situation, please be on the lookout for a school messenger.
- > The school messenger will direct you on next steps.
- > Students will use Canvas and Microsoft teams to participate in virtual instruction.



Follow Us:



@WVMSPack



Instagram

@wvms_pack

The Wolf's Howl

